



Lifestyle Supertech

LifeStyle City

A gateway to a new life with style.

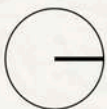


Master Plan



LEGEND

- A** INFORMAL SHOPS
- B** SHOPPING CENTER
- C** TODDLERS PARK
- D** ELDERS PARK
- E** SPORTS AREA
- F** SERENITY PARK
- G** FACILITY - 1
- H** ENTRY
- J** EXIT
- K** FOUNTAIN
- L** CRICKET PITCH



BHIWADI-ALWAR
HIGHWAY (SH-25)

Best Connectivity



Lifestyle City is located bang on State Highway 25.

- 70km from Gurgaon
- 60km from Alwar
- 90km from Delhi

- 10 min. from Tijara Jain Temple
- 20 min. from Heritage Tijara Fort
- 20 min. from Sagar International School

CONNECTING ROAD TO DELHI AND GURGAON

CONNECTING ROAD TO ALWAR

*Location Map

Facilities



Govt Approved Project



2 Cricket Pitches



Badminton Court



Volleyball Court



Open Air Gym



Playground & Swings



CCTV Surveillance



Gated Community



Informal Shopping Centre



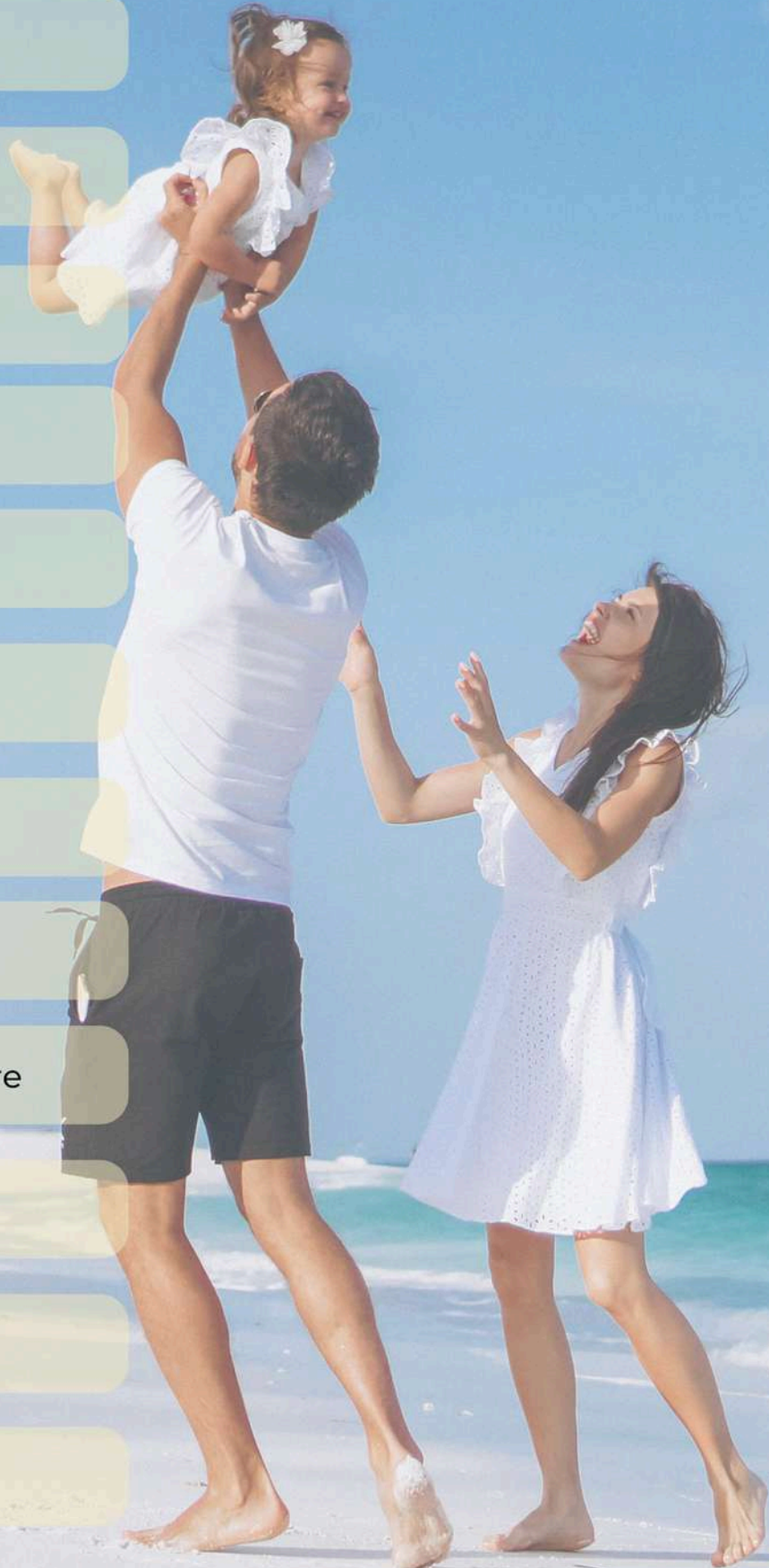
High Street Retail Area



Community area



School Area



Impeccable Infrastructure



Bituminous Road Network



SN8 DWC HDPE Storm and Sewerage Pipes



Hedge lined pathways



Family Sculpture Photo Point



Lush Green Landscape



Green median with trees



Holiday Home



Better livability- Clean air with low AQI.



Scenic Greens-
Less pollution, more open areas & lush green fields around.



Good Health Index-
Sweet drinking ground water with low TDS.



Rejuvenating Home-
60km from hustle bustle of Delhi NCR with serene and peaceful weekend stay to help re-energise mind and body.



Halfway on Delhi - Sariska route



Retirement Home



High safety zone with Delhi Police Training centre 2km away



3-Tier security (Guard, Wire Fence Concertina, CCTV)



Lush green parks at walking distance



Close Proximity to Tijara Jain Temple



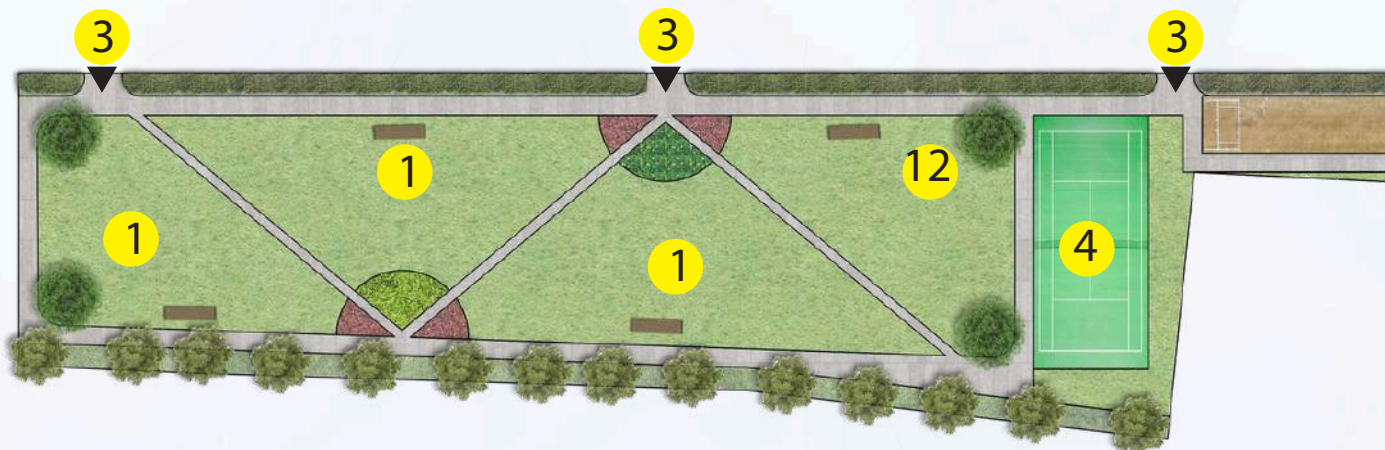
AQI less than 100



Lifestyle Parks



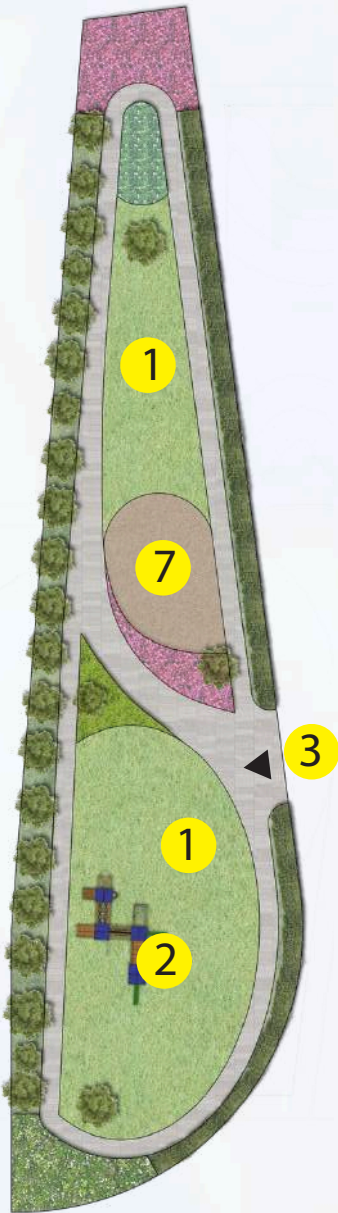
B. SPORTS AREA



Live Work & Play

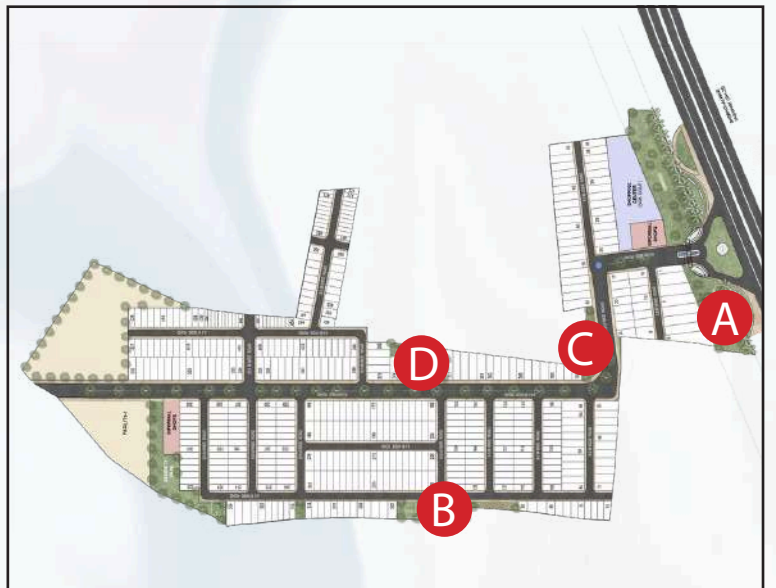
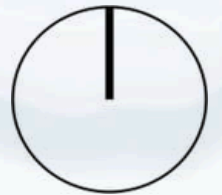
C. TODDLER PARK

D. ELDERS PARK



LEGEND

1. LAWN
2. JUNGLE GYM
3. PARK ENTRY/EXIT
4. BADMINTON COURT
5. CRICKET PITCH
6. KHO-KHO GROUND
7. SANDPIT
8. SWINGS
9. GAZEBO
10. MOUND
11. TREE CHAUPAL
12. OPEN AIR GYM



Amenities



Greens & Parks

Greens & Parks are essential commodities in townships for they help to fight pollution, encourage biodiversity.



18-9M Wide Road

The township has an 18M wide road acting as the central spine of the development.



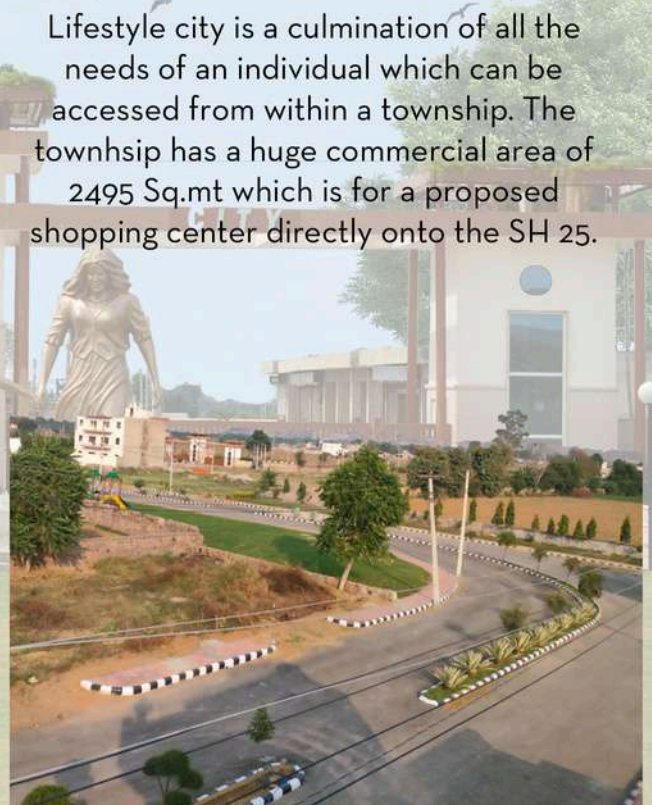
Family Living

Lifestyle City is an essential abode for living together with the family wherein multiple generations of the family can be brought to live and enjoy life together.



School & Commercial Center

Lifestyle city is a culmination of all the needs of an individual which can be accessed from within a township. The township has a huge commercial area of 2495 Sq.mt which is for a proposed shopping center directly onto the SH 25.



Site Gallery

LifeStyle Entry/Exit



Entrance Fountain



18M Wide Road



Entrance Greens



Informal Market



Children Park



Kotkasim Airport

NCR' **3rd Airport**
at
Bhiwadi



Upcoming airport in **Kotkasim village**, Alwar district, under Delhi-Mumbai Industrial Corridor (DMIC), going to be a catalyst for trading activities in **industrial towns** in the region such as Bhiwadi, Rewari, Neemrana and Manesar, creating a major **industrial hub** in the region.

Industrial Hub

Once a sleepy hamlet shunned by the property developers, Bhiwadi, a bustling industrial town on **NH-8**, is today witnessing **frenetic** residential and commercial activity, fast turning into a promising real estate destination.



Honda



Hindware Sanitary



Kajaria tiles plant



PepsiCo



Relaxo Footwear



Kerovit Ceramics



Jaquar Sanitary



United Beverage



Dr. Oetker



Procter & Gamble



Parryware Sanitary



Hero Motocorp



THINK. INSPIRE. FLOURISH

Uno Minda



Saint Gobain



Membrane Group

Tijara Jain Temple



A sacred jain pilgrimage site famously known for 'Atishaya Kshetra' (Place where Miracles happen)





A 250 years old, Parshavanatha temple is situated near the main temple. Navagraha Jain Temple and Padmavati temple are also near temple complex.



10 min. drive from Lifestyle City.



Why LifeStyle City ?

-  Attractive Rates
-  Completed Project
-  RERA Exempted Project
-  Independent Floor Registry
-  Bank Loan Available
-  Plot Reconstitution Allowed
-  PMAY Benefits upto 2,76,000/-
-  3-Tier Security
-  High Rental Yield

All Questions Answered? Book Your Plot Now, Before We Run Out of Inventory!